

PM sensor (Sentinel Next 1S)

+ Datasheets

Sentinel NEXT 1S

Monitor environment - Use low power **Wi-Fi**

Product Number: **XTEMP-3101-0000**

Specifications

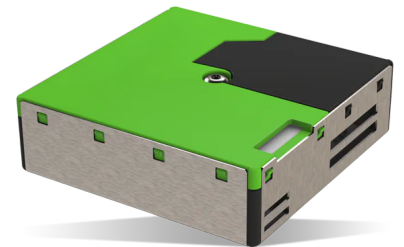
Dimensions (HxWxD)	89mm x 60mm x 20mm (3.50" x 2.36" x 0.78")
Weight	102g (3.60 Oz)
Connectors	10-pin Sensor Connector; micro USB for Charging
Battery	Integrated 1000mAh Rechargeable Li-Ion Battery
Wi-Fi Protocols	IEEE 802.11b/g/n
Wi-Fi Models Supported	Wi-Fi Direct, Infrastructure, Remote
Wi-Fi Encryption	WEP, WPA/WPA2 Personal, PEAPv0, PEAPv1, EAP-TLS
On Board Data Storage	>2 months with a Once/Minute Sampling Rate
Operating Temperature	0°C to 40°C on Charger -20°C to 60°C on Battery only
Non-operating Temperature	-30°C to 70°C
Relative Humidity	10% to 90%
Certifications	FCC, CE



PM Sensor

XPM-1000-0001

Dimension	41 x 41 x 12mm
Weight	28gm
Measurement Method	Laser Scattering (600nm Wavelength)
Particle Sizes	PM0.5, PM1, PM2.5, PM4, PM10
Number Concentration	0-3000/cm ³
Mass Concentration	0-1000microgram/m ³



Remote Monitoring Solution

+ Software

The software **complies with 21 CFR Part 11.**

It meets GMP standards and is used by Hospitals, Clinics, Pharma and Research Institutions.

Cloud Services

MQTT communication

IoT Ingestion Engine

Data Storage

No limits to number of sensors

Dashboard

Visualize sensor

Group/Location/Asset

Alarming and Alerting

Individual & Aggregate Report

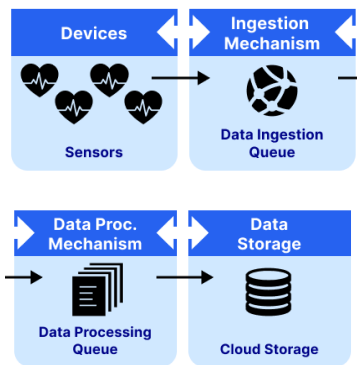
APPS

iOS and Android

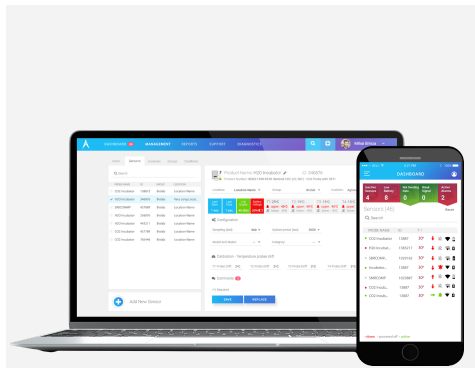
Sensor Configuration Wizard

Quickview Sensor Status

Alarm Notifications



Sensors communicate to the cloud using MQTT via either using WiFi or LTE cell network. No data is lost. All sensor communications can be seen in the cloud for updating firmware, debugging and diagnostics purposes. The system can be scaled to 100,000+ sensors instantly by allocating more resources on the server. The diagram shows the data flow from the sensor to the cloud.



The dashboard sits on top of the Data storage system. It is designed to help the user set sensor parameters, visualize data through graphs and tables, aggregate reports for managers and manage alarms.

Features include:

- User management
- Sensor management
- Alarm management
- Graphs / Data (exporting)
- Sensor Diagnostics
- Admin reports
- Sensor Health
- Sensor Signing
- Manage NIST Certificates
- Alarm Statistics
- Custom Reports and Workflows



Sensor configuration Wizard is an APP to test your network to cloud connectivity, configure sensors in the field and perform advanced diagnostics in case of communication malfunction

Sentinel Next APP provides a quick view of the sensor reading, graph, health and status of the alarms. The alarms can also be acknowledged from the APP. In addition, it can be used to validate sensors in the field.